

**LINE LINK** Pendant-up&downward

# MH70FD





# MH70FD

## Basic Parameters

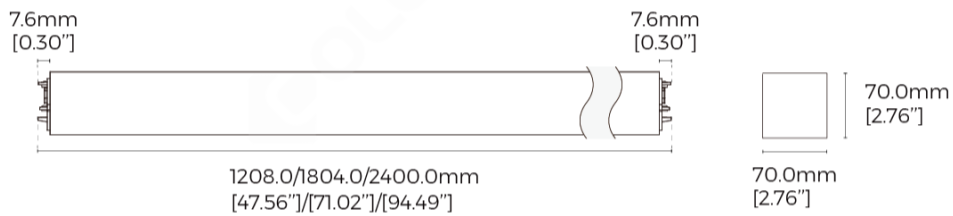
## Electrical Parameters

Input Voltage	AC220-240V
Control	Non-Dimming,1-10V Dimming,DALI Dimming

## Optical Parameters

Version	Regular,High efficiency,Regular-3 CCT Dial Switch,High efficiency-3 CCT Dial Switch
Length	1200mm,1800mm,2400mm
CRI	>80,>90
CCT	2700K,3000K,4000K,6500K,3000K-4200K-6500K

## Dimensions



## Luminaire Parameters

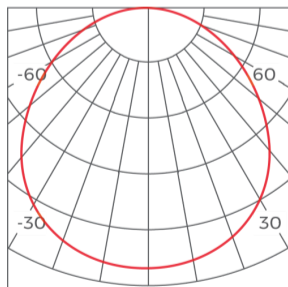
Version	Size	Power(W)	PCB Current(A)	CRI	CCT	Lumens(LM) @White, Sliver	Lumens(LM) @Black
Regular-3 CCT Dial Switch	1800	106	2.35	>80	4200K	12190	10971
Regular-3 CCT Dial Switch	2400	140	3.05	>80	4200K	16100	14490
Regular-3 CCT Dial Switch	1200	70	1.55	>90	4200K	6923	6230.7
Regular-3 CCT Dial Switch	1800	106	2.35	>90	4200K	10483.4	9435.06
Regular-3 CCT Dial Switch	2400	140	3.05	>90	4200K	13846	12461.4
Regular-3 CCT Dial Switch	1200	70	1.55	>80	3000K	7700	6930
Regular-3 CCT Dial Switch	1800	106	2.35	>80	3000K	11660	10494
Regular-3 CCT Dial Switch	2400	140	3.05	>80	3000K	15400	13860
Regular-3 CCT Dial Switch	1200	70	1.55	>90	3000K	6622	5959.8
Regular-3 CCT Dial Switch	1800	106	2.35	>90	3000K	10027.6	9024.84
Regular-3 CCT Dial Switch	2400	140	3.05	>90	3000K	13244	11919.6
Regular-3 CCT Dial Switch	1200	70	1.55	>80	6500K	7700	6930
Regular-3 CCT Dial Switch	1800	106	2.35	>80	6500K	11660	10494
Regular-3 CCT Dial Switch	2400	140	3.05	>80	6500K	15400	13860
Regular-3 CCT Dial Switch	1200	70	1.55	>90	6500K	6622	5959.8
Regular-3 CCT Dial Switch	1800	106	2.35	>90	6500K	10027.6	9024.84
Regular-3 CCT Dial Switch	2400	140	3.05	>90	6500K	13244	11919.6

Regular	1200	70	1.55	>80	4000K	7700	6930
Regular	1800	106	2.35	>80	4000K	11660	10494
Regular	2400	140	3.05	>80	4000K	15400	13860
Regular	1200	70	1.55	>90	4000K	6622	5959.8
Regular	1800	106	2.35	>90	4000K	10027.6	9024.84
Regular	2400	140	3.05	>90	4000K	13244	11919.6
Regular	1200	70	1.55	>80	2700K	6545	5890.5
Regular	1800	106	2.35	>80	2700K	9911	8919.9
Regular	2400	140	3.05	>80	2700K	13090	11781
Regular	1200	70	1.55	>90	2700K	5628.7	5065.83
Regular	1800	106	2.35	>90	2700K	8523.46	7671.114
Regular	2400	140	3.05	>90	2700K	11257.4	10131.66
Regular	1200	70	1.55	>80	3000K	6930	6237
Regular	1800	106	2.35	>80	3000K	10494	9444.6
Regular	2400	140	3.05	>80	3000K	13860	12474
Regular	1200	70	1.55	>90	3000K	5959.8	5363.82
Regular	1800	106	2.35	>90	3000K	9024.84	8122.356
Regular	2400	140	3.05	>90	3000K	11919.6	10727.64
Regular	1200	70	1.55	>80	5000K	7700	6930
Regular	1800	106	2.35	>80	5000K	11660	10494
Regular	2400	140	3.05	>80	5000K	15400	13860
Regular	1200	70	1.55	>90	5000K	6622	5959.8
Regular	1800	106	2.35	>90	5000K	10027.6	9024.84
Regular	2400	140	3.05	>90	5000K	13244	11919.6
Regular	1200	70	1.55	>80	6500K	7700	6930
Regular	1800	106	2.35	>80	6500K	11660	10494
Regular	2400	140	3.05	>80	6500K	15400	13860
Regular	1200	70	1.55	>90	6500K	6622	5959.8
Regular	1800	106	2.35	>90	6500K	10027.6	9024.84
Regular	2400	140	3.05	>90	6500K	13244	11919.6
High-Efficiency	1200	54	1.2	>80	4000K	8100	7290
High-Efficiency	1800	81	1.8	>80	4000K	12150	10935
High-Efficiency	2400	108	2.4	>80	4000K	16200	14580
High-Efficiency	1200	54	1.2	>90	4000K	7452	6706.8
High-Efficiency	1800	81	1.8	>90	4000K	11178	10060.2
High-Efficiency	2400	108	2.4	>90	4000K	14904	13413.6
High-Efficiency	1200	54	1.2	>80	2700K	7695	6925.5
High-Efficiency	1800	81	1.8	>80	2700K	11542.5	10388.25
High-Efficiency	2400	108	2.4	>80	2700K	15390	13851
High-Efficiency	1200	54	1.2	>90	2700K	7079.4	6371.46
High-Efficiency	1800	81	1.8	>90	2700K	10619.1	9557.19
High-Efficiency	2400	108	2.4	>90	2700K	14158.8	12742.92
High-Efficiency	1200	54	1.2	>80	3000K	8100	7290
High-Efficiency	1800	81	1.8	>80	3000K	12150	10935
High-Efficiency	2400	108	2.4	>80	3000K	16200	14580
High-Efficiency	1200	54	1.2	>90	3000K	7452	6706.8
High-Efficiency	1800	81	1.8	>90	3000K	11178	10060.2
High-Efficiency	2400	108	2.4	>90	3000K	14904	13413.6
High-Efficiency	1200	54	1.2	>80	5000K	8100	7290
High-Efficiency	1800	81	1.8	>80	5000K	12150	10935
High-Efficiency	2400	108	2.4	>80	5000K	16200	14580

High-Efficiency	1200	54	12	>90	5000K	7452	6706.8
High-Efficiency	1800	81	1.8	>90	5000K	11178	10060.2
High-Efficiency	2400	108	2.4	>90	5000K	14904	13413.6
High-Efficiency	1200	54	12	>80	6500K	8100	7290
High-Efficiency	1800	81	1.8	>80	6500K	12150	10935
High-Efficiency	2400	108	2.4	>80	6500K	16200	14580
High-Efficiency	1200	54	12	>90	6500K	7452	6706.8
High-Efficiency	1800	81	1.8	>90	6500K	11178	10060.2
High-Efficiency	2400	108	2.4	>90	6500K	14904	13413.6
High efficiency-3 CCT Dial Switch	1200	54	12	>80	4200K	7830	7047
High efficiency-3 CCT Dial Switch	1800	81	1.8	>80	4200K	11745	10570.5
High efficiency-3 CCT Dial Switch	2400	108	2.4	>80	4200K	15660	14094
High efficiency-3 CCT Dial Switch	1200	54	12	>90	4200K	7203.6	6483.24
High efficiency-3 CCT Dial Switch	1800	81	1.8	>90	4200K	10805.4	9724.86
High efficiency-3 CCT Dial Switch	2400	108	2.4	>90	4200K	14407.2	12966.48
High efficiency-3 CCT Dial Switch	1200	54	12	>80	3000K	7560	6804
High efficiency-3 CCT Dial Switch	1800	81	1.8	>80	3000K	11340	10206
High efficiency-3 CCT Dial Switch	2400	108	2.4	>80	3000K	15120	13608
High efficiency-3 CCT Dial Switch	1200	54	12	>90	3000K	6955.2	6259.68
High efficiency-3 CCT Dial Switch	1800	81	1.8	>90	3000K	10432.8	9389.52
High efficiency-3 CCT Dial Switch	2400	108	2.4	>90	3000K	13910.4	12519.36
High efficiency-3 CCT Dial Switch	1200	54	12	>80	6500K	7560	6804
High efficiency-3 CCT Dial Switch	1800	81	1.8	>80	6500K	11340	10206
High efficiency-3 CCT Dial Switch	2400	108	2.4	>80	6500K	15120	13608
High efficiency-3 CCT Dial Switch	1200	54	12	>90	6500K	6955.2	6259.68
High efficiency-3 CCT Dial Switch	1800	81	1.8	>90	6500K	10432.8	9389.52
High efficiency-3 CCT Dial Switch	2400	108	2.4	>90	6500K	13910.4	12519.36

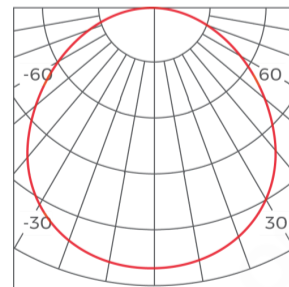
## Light Distribution

### Regular Version



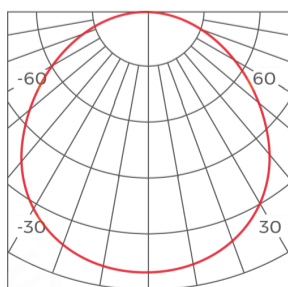
h(m)	D(cm)	E(lx)
1	249	2084
2	498	521
3	746	232
4	995	130

### High efficiency Version



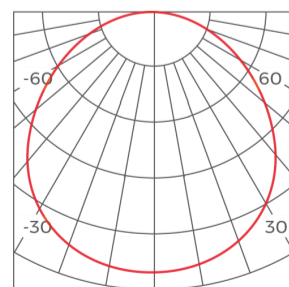
h(m)	D(cm)	E(lx)
1	249	2378
2	498	594
3	748	264
4	997	149

### Regular-3CCT Dial Switch Version



h(m)	D(cm)	E(lx)
1	249	2107
2	498	527
3	747	234
4	996	132

### High efficiency-3CCT Dial Switch Version



h(m)	D(cm)	E(lx)
1	249	2530
2	498	632
3	747	280
4	996	132

## Common Accessories

### Standard Corner



#### MH70FD-L90

Applicable product model: MH70FD  
Installation method: L-shaped 90° splicing  
Material process: AL6063-T5/spraying  
Coating: Black(RAL9006), White(RAL9003)  
Diffuser Nature: Diffuser  
Light source: Constant Current Rigid PCB  
Size: L300\*W70\*H70mm

### Power feeder



#### CM-27

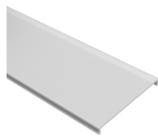
Applicable product model: MS50/MH50/MS70/MH70  
Type: Non-dimming  
Input line(3PIN)  
Material process: Wiring cover: AL6061/Input line: PVC  
Size: Wiring cover: 113\*23.2\*1.5mm/Input line: 2200\*φ6mm  
Quantity: 1PCS/set  
Others: Including 1pcs wiring cover+1pcs input line



#### CM-28

Applicable product model: MS50/MH50/MS70/MH70  
Type: Dimming  
Input line(5PIN)  
Material process: Wiring cover: AL6061/Input line: PVC  
Size: Wiring cover: 113\*23.2\*1.5mm/Input line: 2200\*φ7.2mm  
Quantity: 1PCS/set  
Others: Including 1pcs wiring cover+1pcs input line

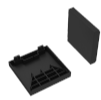
### Cover



#### CV-MS70FD

Applicable product model: MS70FD/MH70FD(suitable for down-lighting)  
Diffuser Nature: Diffuser  
Material process: PC  
Light transmittance: 80%  
Size: 50m/Reel: 50000\*65.8\*5.7mm  
Other: Fire protection rating UL94-V2;

### End cap accessory



#### EC-MS70

Applicable product model: MS70/MH70  
Material process: ADC12/powder-coated  
Size: L70.2\*W70.7\*H17mm  
Quantity: 2PCS/set

### Installation accessory



#### PN(E)-D

Applicable product model: LINE E CO series  
Installation method: Pendant  
Material process: Nickel plating  
Size: /  
Quantity: 2PCS/SET  
Other: 2 meter wire rope 2PCS, cable locker 2PCS, cable holder 2PCS, M5 flat head Phillips screws 2PCS, M4\*35mm screws 2PCS, expansion tube 2PCS



#### PN-DXX

Applicable product model: LS1911C/LS1911K/LS3535/LS5050/LS3360/LS4067/LS5470(F)/LS7977/LT60/BH3360/BH5470/BH7977/BS3360/BS5470/BS7977/LS5470(F)/LS7977/LT60/LINE40 series product/LINE60 series product/TLS-R6X0 track  
Installation method: Pendant  
Material process: Pearl Chrome  
Size: /  
Quantity: 2PCS/set  
Other: Junction box not included, 2 pcs pendant cable accessory, pendant cable length 4m, rectangular screw model.



#### PY(E)-D

Applicable product model: MS35/MH35/MS50/MH50/MS70/MH70  
Installation method: Junction Box (pendant wire)  
Material process: SPCC/Spraying surface  
Size: Box: D80\*30\*1mm, Pendant wire: D1.5\*2000/4000mm  
Quantity: 1 set  
Other: Including junction box, 2PCS wire rope, wire rope 2M/4M length optional

## Packing

Size (mm/box)	Quantity /box	QTY/CTN	NW (kg/box)	N. WT (ctn)	G.WT (ctn)	Size (cm/carton)	Product Size (mm)
1205*95*80mm	1	4	1.8	7.2	8.5	1220*185*175mm	1208*70*70mm
1815*95*80mm	1	4	2.85	11.4	13.1	1820*185*175mm	1803*70*70mm
2410*95*80mm	1	4	3.75	15	17.1	2415*185*175mm	2399*70*70mm